

SHEKNOWS.com.

VINTAGE STYLE GUIDE

LOOKBOOK

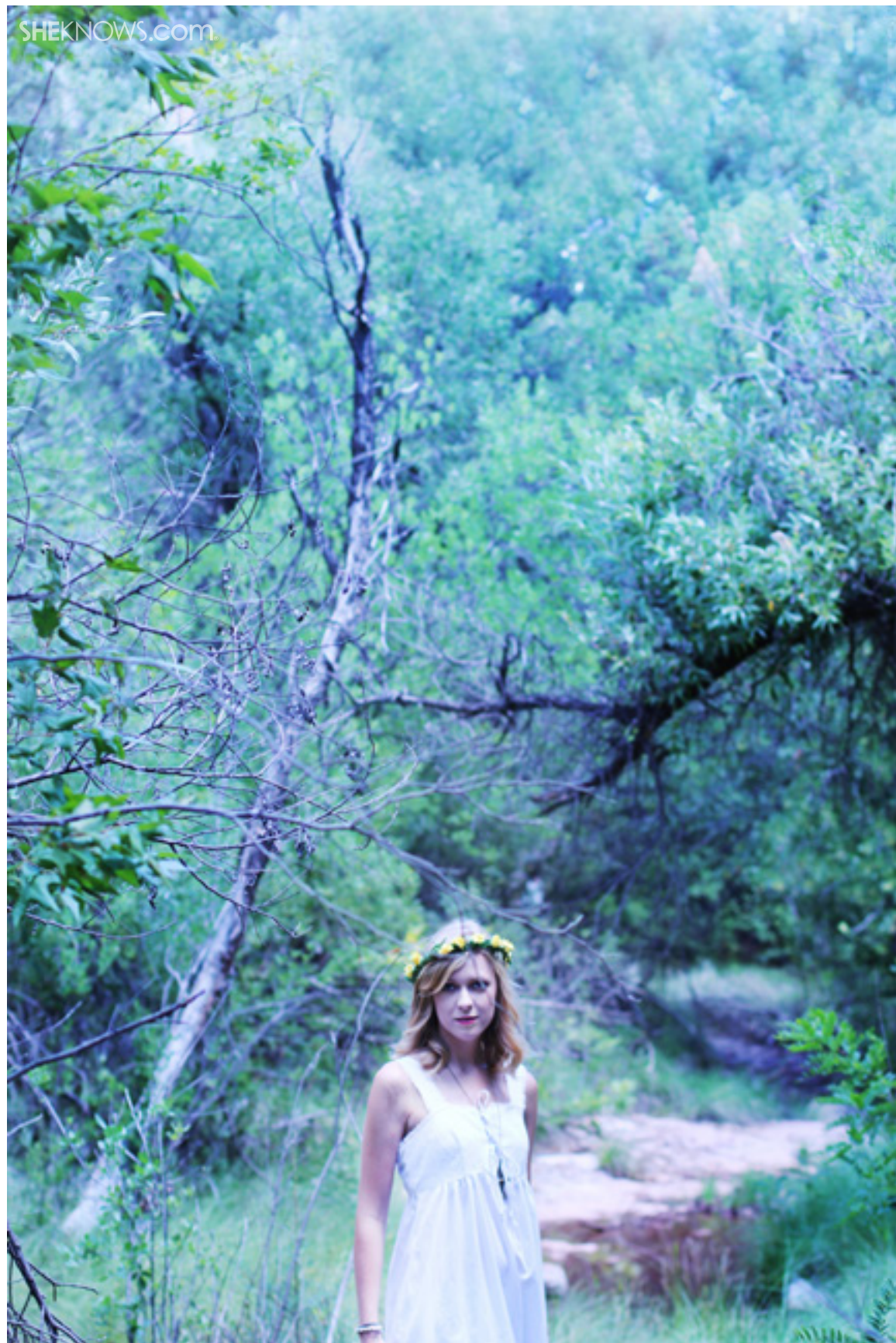


BOHO-CHIC
'60S SWEETHEART
GINGHAM GIRL
ROCKABILLY

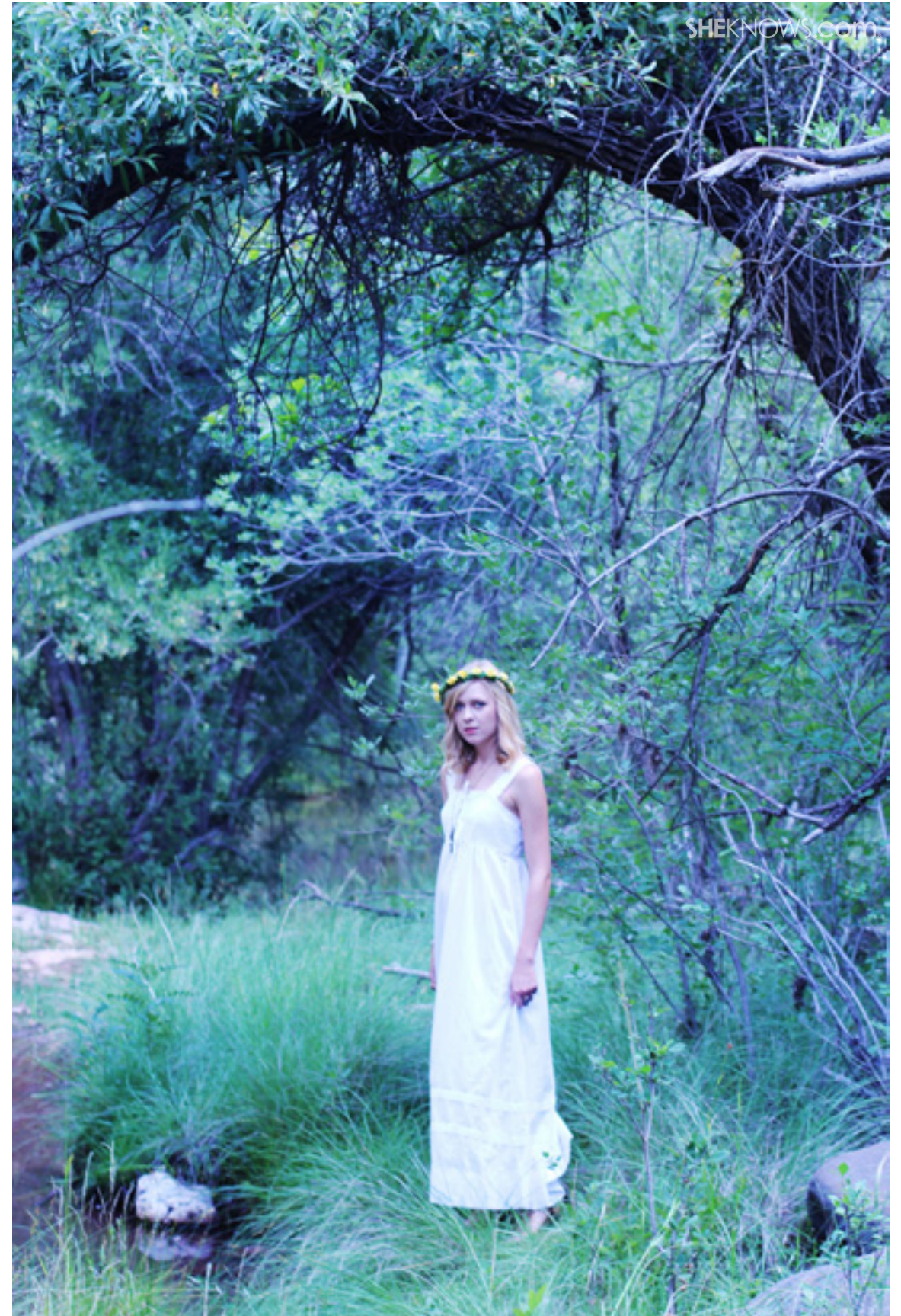


boho **CHIC**

The key to Bohemian Chic style is outfits that are baggy in all the right places and fitted where appropriate – a shabby vibe that’s polished and put together for the modern woman.









Gingham **GIRL**

It's more than just a print – it's an element to an era of style. Think *Mad Men* meets *Susie Homemaker*. It's cute and wholesome but also sparks a little mystery.







ROCKABILLY

This is a very pinup-esque girl with a classic Rock N' Roll edge. A modern Rockabilly emulates that same pinup girl vibe and mixes in elegance for a personal touch.







‘60s *SWEET HEART*

Though the ‘60s suggest all hippies and no showers, another defining factor of this decade of style is pretty prints and grandma’s pearls.







